

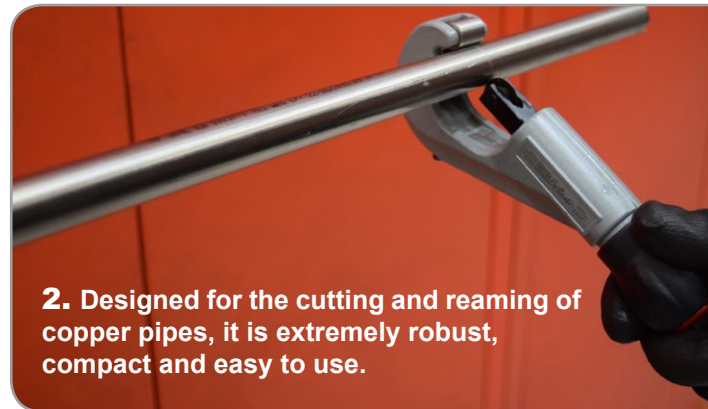
# STAINLESS STEEL PIPE CUTTER



The wide range of Inox Pipe cutters of EGA Master is designed for the easy and quick cut of different materials and sizes tubes, following the needs of the user. Its precision machining provides the quickest and smoothest action.



**1.** Precision machining provides the **quickest and smoothest action.**



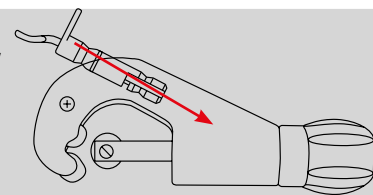
**2.** Designed for the cutting and reaming of copper pipes, it is extremely robust, compact and easy to use.

**3.** Laser marked graduated scale to facilitate working action.



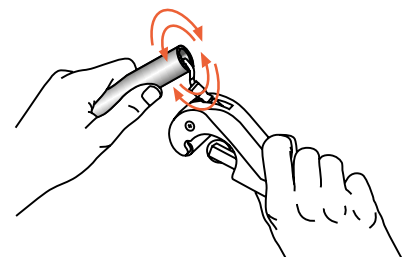
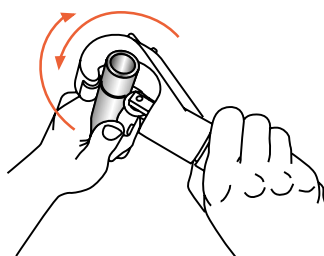
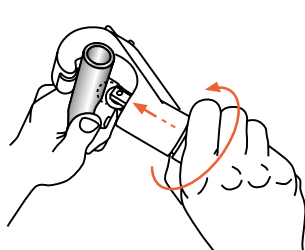
**4.** Extra cutting wheel at the knob.

**5.** Extractable reamer can work assembled in the tubing cutter or independently.



**6.** Stainless steel Rollers to avoid contamination, without groove.

**7.** Long lasting HSS cutting Wheel for accurate and fast cutting.



### MINI

<b>COD.</b>							
<b>63076</b>	Stainless steel	3-22	120	20	1	63113	20



### MINI 30

<b>COD.</b>							
<b>63169</b>	Stainless steel	3-30	210	10	1	63087	20



## TECHNICAL SPECIFICATIONS

<b>MATERIAL</b>	<b>Body and carriage</b>	Zinc alloy (Zamak)
	<b>Cutting wheel, Arbor and axle of the Cutting Wheel and rollers</b>	Special steel
	<b>Rollers</b>	Stainless steel
<b>HARDNESS</b>	<b>Cutting wheel and rollers</b>	55-60 Hrc
	<b>Axle of the cutting wheel and rollers</b>	54-58 Hrc
<b>FINISH</b>	<b>Body</b>	Painted in gray color Ral-7042 semi-texturized
	<b>Knob</b>	Black finish
	<b>Screw, cutting wheel and axle of the cutting wheel</b>	Black finish
	<b>Rollers</b>	Black finish

### CLASSIC 32

<b>COD.</b>							
<b>63094</b>	Stainless steel	3-32	300	1	1	63113	20



## TECHNICAL SPECIFICATIONS

<b>MATERIAL</b>	<b>Body and carriage</b>	Zinc alloy (Zamak)
	<b>Cutting Wheel, arbor and axle of the cutting wheel and rollers</b>	Special steel
	<b>Rollers</b>	Stainless steel
<b>HARDNESS</b>	<b>Cutting wheel and rollers</b>	55-60 Hrc
	<b>Axle of the cutting wheel and rollers</b>	54-58 Hrc
<b>FINISH</b>	<b>Body</b>	Painted in gray color Ral-7042 semi-texturized
	<b>Knob</b>	Black finish
	<b>Knob cover</b>	Red finish
	<b>Screw, cutting wheel and axle of the cutting wheel</b>	Black finish
	<b>Rollers</b>	Black finish

## TELESCOPIC 32

COD.							
<b>63118</b>	Stainless steel	6-32	290	1	I	63113	20



# TECHNICAL SPECIFICATIONS

MATERIAL	Body and carriage	Zinc alloy (Zamak)
	Cutting wheel, husillo and axle of the cutting wheel and rollers	Special steel
	Rollers	Stainless Steel
HARDNESS	Cutting wheel and rollers	55-60 Hrc
	Axle of the Cutting wheel and rollers	54-58 Hrc
FINISH	Body	Painted in gray color Ral-7042 semi-texturized
	Knob	Black finish
	Knob cover	Red finish
	Screw, cutting wheel and axle of the cutting wheel	Black finish
	Rollers	Black finish

## UNIQUE

COD.							
<b>63078</b>	Stainless steel	6-35	480	1	I	63114	10
<b>63121</b>		6-42	550	8			



# TECHNICAL SPECIFICATIONS

MATERIAL	Body, Knob, reamer and carriage	Zinc alloy (Zamak)
	Cutting wheel, axle of the cutting wheel and rollers	Special steel
	Rollers	Stainless Steel
HARDNESS	Cutting wheel, rollers and reamer	55-60 Hrc
	Axle of the cutting wheel and rollers	54-58 Hrc
FINISH	Body	Painted in gray color Ral-7042 semi-texturized
	Knob	Black finish
	Screw, cutting wheel and axle of the cutting wheel	Black finish
	Rollers	Black finish

### AUTOMATIC 50

COD.	MAX mm	g					
<b>63364</b>	Stainless steel	6-50	450	1	I	63721	10



### AUTOMATIC 67

COD.	MAX mm	g					
<b>63126</b>	Stainless steel	6-67	750	1	I	63114	10



## TECHNICAL SPECIFICATIONS

MATERIAL	Body	Aluminum alloy
	Knob	Zinc alloy (Zamak)
	Cutting wheel, carriage, screw and axle of the cutting wheel and rollers	Special steel
HARDNESS	Rollers	Stainless Steel
	Cutting	55-60 Hrc
	Rollers and pin	45-50 Hrc
	Axle of the cutting wheel and rollers	43-48 Hrc
FINISH	Body	Painted in gray color Ral-7042 semi-texturized
	Knob	Black finish
	Screw, Cutting wheel and axle of the cutting wheel	Black finish
	Rollers	Black finish

### KIT 3 PCS.

COD.	PCS.	COD.	PCS.
<b>69548</b>	3	63096, 63094, 63121	



### DISPLAYS

COD.	PCS.		
<b>55568</b>	20		
PCS./UN.	COD.	PCS.	O.D. mm
4		63094	
		63118	Ø 32 mm
		63078	Ø 35 mm
		63121	Ø 42 mm
		63188	Ø 45 mm

