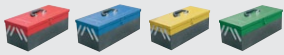


TOOL BOXES



EGA Master Tool Boxes are manufactured in reinforced sheet steel, offering the best combination of weight & strength for comfortable use. Dimensions allow for the storage of large tools and devices, such as levels, hacksaw, etc.

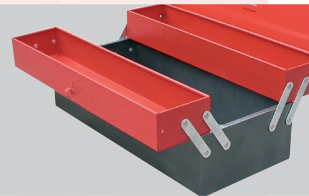


Available in 4 colors

1. They are manufactured from reinforced sheet steel providing improved durability.



2. Different sizes and multiple compartments are available, front or side for the sorting of tools.



3. They have capacities of up to 25kg.

4. They are easy to carry.

TOOL BOXES



COD		LxWxH	Kg.
51022	●	466x210x170	3,0
51481	●		
51493	●		
51505	●		









COD		LxWxH	Kg.
51023	●	495x200x293	4,5
51482	●		
51494	●		
51506	●		

TOOL BOXES



5 compartments!!
Capacity up to 20 kilos!!

COD		LxWxH	
51038		404x200x195	3,3
51485			
51497			
51509			


TECHNICAL SPECIFICATIONS

MATERIAL	Reinforced steel	
THICKNESS	51022	Steel plate from 0.5 to 0.6mm 1.5 mm hinge bar
	51023 51038	Steel plate: 1 mm 2 mm hinge bar
	DIMENSIONS	51022
51023		495x200x293 mm
51038		404x200x195 mm
FINISHING	Cod. 51022, 51023, 51038 Painted in epoxy powder Red RAL 2002 semitexturized Cod. 51481, 51482, 51485 Painted in blue RAL-5017* Cod. 51493, 51494, 51497 Painted in yellow RAL-1003* Cod. 51505, 51506, 51509 Painted in green RAL-6032*	

*Approximate colors



Capacity up to 20 kilos!!

COD	LxWxH	
64648	550x245x250	4,0

TECHNICAL SPECIFICATIONS

MATERIAL	Steel plate
THICKNESS	Steel plate de 1 mm
DIMENSIONS	550x245x250
FINISHING	Painted in epoxy powder Red RAL 2002 semitexturized and grey tone / Handle with a black finish