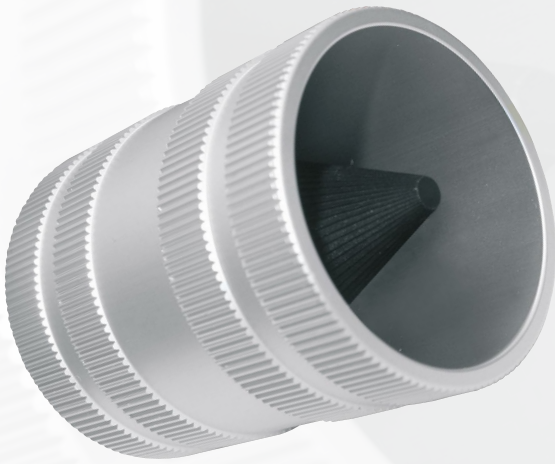


INTERNAL & EXTERNAL PIPE REAMERS



EGA Master's high quality pipe reamers are designed for easy and rapid internal and external reaming of pipes.

5/16" (8mm) to 2.1/8" (54mm) O.D. Pipe capacity







1. Perfectly tempered and ground blades for easy and effortless reaming.

2. Robust aluminium housing for heavy duty use.

3. Suitable for copper, steel, plastic, stainless steel, brass and aluminium pipe.

INTERNAL & EXTERNAL PIPE REAMERS



COD					
63958	Cu / STEEL / PLASTIC / INOX / BRASS / ALUMINIUM	8-35mm / 5/16"-1.3/8"	250	1	1
63959		10-54mm / 1/2"-2.1/8"	500		

TECHNICAL SPECIFICATIONS

MATERIAL	Body	Aluminium
HARDNESS	Cutting edges	50-55 HRc